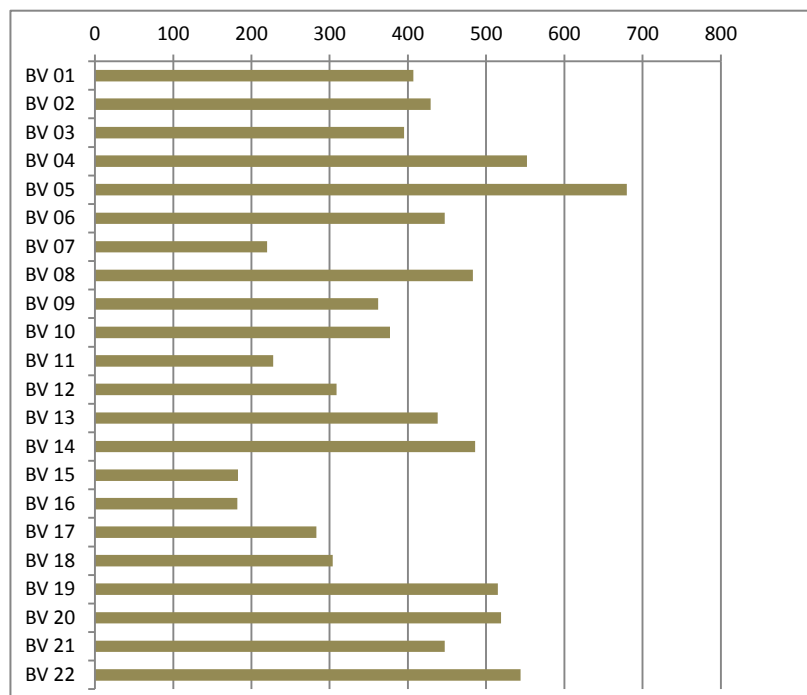




*Résultats électoraux*

# **Législatives 2017**



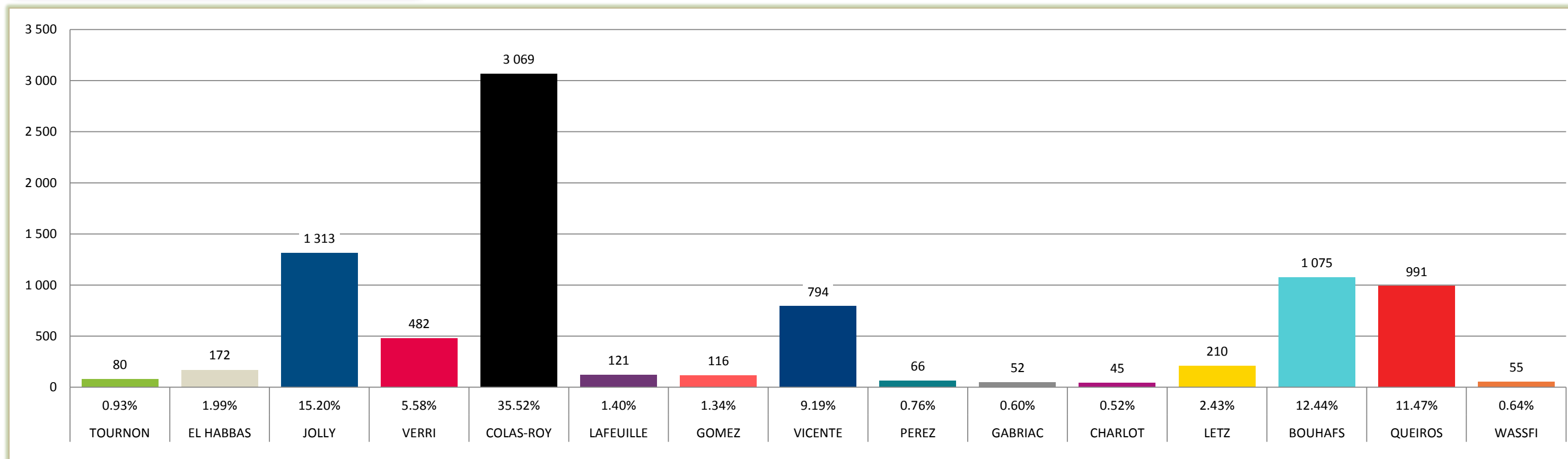
**Bureaux de vote**

- BV 01 : Hôtel de ville
- BV 02 : Jean-Pierre Melville
- BV 03 : Paul Langevin
- BV 04 : Paul Langevin
- BV 05 : Estienne d'Orves
- BV 06 : La Rampe
- BV 07 : Auguste Delaune
- BV 08 : Auguste Delaune
- BV 09 : Marcel David
- BV 10 : Danielle Casanova
- BV 11 : Danielle Casanova
- BV 12 : Paul Vaillant Couturier
- BV 13 : Paul Vaillant Couturier
- BV 14 : Jean Jaurès
- BV 15 : Jean-Paul Marat
- BV 16 : Jean-Paul Marat
- BV 17 : Marcel Cachin
- BV 18 : Marcel Cachin
- BV 19 : Jean Moulin
- BV 20 : Jean Moulin
- BV 21 : Frédéric Joliot Curie
- BV 22 : Irène Joliot Curie

**Candidats**

- Jean-Jacques TOURNON
- Liesse EL HABBAS
- Alexis JOLLY
- Pierre VERRI
- Jean-Charles COLAS-ROY
- Bruno LAFEUILLE
- Chantal GOMEZ
- Magalie VICENTE
- Hervé PEREZ
- Alexandre GABRIAC
- Philippe CHARLOT
- Elisabeth LETZ
- Taha BOUHAFS
- David QUEIROS
- Asra WASSFI

Inscrits :	20 879	
Votants :	8 790	42.10%
Abstentions :	12 089	57.90%
Blancs :	112	1.27%
Nuls :	37	0.42%
Exprimés :	8 641	98.30%



# ELECTIONS LEGISLATIVES 2017

## 1er tour - Scrutin du 11 juin



	Inscrits	Votants	Absent.	Blancs	Nuls	Exprimés	Jean J. TOURNON	Liesse EL HABBAS	Alexis JOLLY	Pierre VERRI	Jean-Ch. COLAS-ROY	Bruno LAFEUILLE	Chantal GOMEZ	Magalie VICENTE	Hervé PEREZ	Alexandre GABRIAC	Philippe CHARLOT	Elisabeth LETZ	Taha BOUHAFS	David QUEIROS	Asra WASSFI
<b>■ ECHIROLLES</b>	<b>20 879</b>	<b>8 790</b>	<b>12 089</b>	<b>112</b>	<b>37</b>	<b>8 641</b>	<b>80</b> 0.93%	<b>172</b> 1.99%	<b>1 313</b> 15.20%	<b>482</b> 5.58%	<b>3 069</b> 35.52%	<b>121</b> 1.40%	<b>116</b> 1.34%	<b>794</b> 9.19%	<b>66</b> 0.76%	<b>52</b> 0.60%	<b>45</b> 0.52%	<b>210</b> 2.43%	<b>1 075</b> 12.44%	<b>991</b> 11.47%	<b>55</b> 0.64%
<b>BV 01</b>	946	407	539	4	3	400	4	3	58	16	159	8	2	25	4	5	1	14	64	36	1
HOTEL DE VILLE		43.02%	56.98%	0.98%	0.74%	98.28%	1.00%	0.75%	14.50%	4.00%	39.75%	2.00%	0.50%	6.25%	1.00%	1.25%	0.25%	3.50%	16.00%	9.00%	0.25%
<b>BV 02</b>	962	429	533	6	5	418	0	6	67	25	138	14	2	32	4	3	4	7	66	49	1
ESPACE MELVILLE		44.59%	55.41%	1.40%	1.17%	97.44%	0.00%	1.44%	16.03%	5.98%	33.01%	3.35%	0.48%	7.66%	0.96%	0.72%	0.96%	1.67%	15.79%	11.72%	0.24%
<b>BV 03</b>	881	395	486	6	2	387	5	5	51	29	138	5	5	45	0	1	0	11	44	44	4
G.S. PAUL LANGEVIN		44.84%	55.16%	1.52%	0.51%	97.97%	1.29%	1.29%	13.18%	7.49%	35.66%	1.29%	1.29%	11.63%	0.00%	0.26%	0.00%	2.84%	11.37%	11.37%	1.03%
<b>BV 04</b>	1 122	552	570	4	2	546	8	3	85	28	217	5	2	50	5	5	1	22	56	55	4
G.S. PAUL LANGEVIN		49.20%	50.80%	0.72%	0.36%	98.91%	1.47%	0.55%	15.57%	5.13%	39.74%	0.92%	0.37%	9.16%	0.92%	0.92%	0.18%	4.03%	10.26%	10.07%	0.73%
<b>BV 05</b>	1 231	680	551	9	3	668	8	4	94	37	261	6	7	54	4	0	1	14	101	76	1
ESPACE D'ESTIENNE D'ORVES		55.24%	44.76%	1.32%	0.44%	98.24%	1.20%	0.60%	14.07%	5.54%	39.07%	0.90%	1.05%	8.08%	0.60%	0.00%	0.15%	2.10%	15.12%	11.38%	0.15%
<b>BV 06</b>	972	447	525	9	2	436	6	7	73	16	159	5	4	41	3	3	1	9	47	55	7
LA RAMPE		45.99%	54.01%	2.01%	0.45%	97.54%	1.38%	1.61%	16.74%	3.67%	36.47%	1.15%	0.92%	9.40%	0.69%	0.69%	0.23%	2.06%	10.78%	12.61%	1.61%
<b>BV 07</b>	764	220	544	5	1	214	1	10	51	4	49	4	7	7	1	0	1	1	42	35	1
G.S. AUGUSTE DELAUNE		28.80%	71.20%	2.27%	0.45%	97.27%	0.47%	4.67%	23.83%	1.87%	22.90%	1.87%	3.27%	3.27%	0.47%	0.00%	0.47%	0.47%	19.63%	16.36%	0.47%
<b>BV 08</b>	1 083	483	600	4	2	477	4	6	76	30	169	5	8	47	7	1	3	9	61	48	3
G.S. AUGUSTE DELAUNE		44.60%	55.40%	0.83%	0.41%	98.76%	0.84%	1.26%	15.93%	6.29%	35.43%	1.05%	1.68%	9.85%	1.47%	0.21%	0.63%	1.89%	12.79%	10.06%	0.63%
<b>BV 09</b>	821	362	459	9	1	352	5	1	83	15	128	2	3	31	4	1	1	4	39	34	1
GYMNASSE MARCEL DAVID		44.09%	55.91%	2.49%	0.28%	97.24%	1.42%	0.28%	23.58%	4.26%	36.36%	0.57%	0.85%	8.81%	1.14%	0.28%	0.28%	1.14%	11.08%	9.66%	0.28%
<b>BV 10</b>	919	377	542	6	1	370	2	5	79	14	116	5	5	31	3	1	1	11	44	53	0
G.S. DANIELLE CASANOVA		41.02%	58.98%	1.59%	0.27%	98.14%	0.54%	1.35%	21.35%	3.78%	31.35%	1.35%	1.35%	8.38%	0.81%	0.27%	0.27%	2.97%	11.89%	14.32%	0.00%
<b>BV 11</b>	904	228	676	5	1	222	0	15	36	8	60	3	2	18	4	4	3	3	39	25	2
G.S. DANIELLE CASANOVA		25.22%	74.78%	2.19%	0.44%	97.37%	0.00%	6.76%	16.22%	3.60%	27.03%	1.35%	0.90%	8.11%	1.80%	1.80%	1.35%	1.35%	17.57%	11.26%	0.90%
<b>BV 12</b>	899	309	590	6	2	301	3	13	48	14	75	7	9	21	5	2	0	3	56	43	2
G.S. PAUL VAILLANT COUTURIER		34.37%	65.63%	1.94%	0.65%	97.41%	1.00%	4.32%	15.95%	4.65%	24.92%	2.33%	2.99%	6.98%	1.66%	0.66%	0.00%	1.00%	18.60%	14.29%	0.66%
<b>BV 13</b>	766	438	328	3	2	433	5	0	53	22	210	2	4	60	4	1	3	7	32	27	3
G.S. PAUL VAILLANT COUTURIER		57.18%	42.82%	0.68%	0.46%	98.86%	1.15%	0.00%	12.24%	5.08%	48.50%	0.46%	0.92%	13.86%	0.92%	0.23%	0.69%	1.62%	7.39%	6.24%	0.69%
<b>BV 14</b>	945	486	459	2	0	484	5	6	46	36	193	9	4	81	7	3	3	11	37	41	2
G.S. JEAN JAURES		51.43%	48.57%	0.41%	0.00%	99.59%	1.03%	1.24%	9.50%	7.44%	39.88%	1.86%	0.83%	16.74%	1.45%	0.62%	0.62%	2.27%	7.64%	8.47%	0.41%
<b>BV 15</b>	775	183	592	5	0	178	1	7	31	13	50	4	1	9	2	2	1	2	28	24	3
G.S. JEAN PAUL MARAT		23.61%	76.39%	2.73%	0.00%	97.27%	0.56%	3.93%	17.42%	7.30%	28.09%	2.25%	0.56%	5.06%	1.12%	1.12%	0.56%	1.12%	15.73%	13.48%	1.69%
<b>BV 16</b>	832	182	650	2	1	179	0	18	40	10	41	3	7	7	0	1	1	0	30	20	1
G.S. JEAN PAUL MARAT		21.88%	78.13%	1.10%	0.55%	98.35%	0.00%	10.06%	22.35%	5.59%	22.91%	1.68%	3.91%	3.91%	0.00%	0.56%	0.56%	0.00%	16.76%	11.17%	0.56%
<b>BV 17</b>	815	283	532	6	1	276	2	7	62	10	79	5	5	21	0	3	2	2	30	47	1
G.S. MARCEL CACHIN		34.72%	65.28%	2.12%	0.35%	97.53%	0.72%	2.54%	22.46%	3.62%	28.62%	1.81%	1.81%	7.61%	0.00%	1.09%	0.72%	0.72%	10.87%	17.03%	0.36%
<b>BV 18</b>	997	304	693	4	1	299	0	27	46	17	90	5	6	14	1	4	1	8	40	37	3
G.S. MARCEL CACHIN		30.49%	69.51%	1.32%	0.33%	98.36%	0.00%	9.03%	15.38%	5.69%	30.10%	1.67%	2.01%	4.68%	0.33%	1.34%	0.33%	2.68%	13.38%	12.37%	1.00%
<b>BV 19</b>	1 115	515	600	4	1	510	8	13	50	43	156	8	14	28	3	2	8	22	67	87	1
G.S. JEAN MOULIN		46.19%	53.81%	0.78%	0.19%	99.03%	1.57%	2.55%	9.80%	8.43%	30.59%	1.57%	2.75%	5.49%	0.59%	0.39%	1.57%	4.31%	13.14%	17.06%	0.20%
<b>BV 20</b>	1 142	519	623	7	2	510	2	13	57	34	191	4	14	40	2	1	4	19	70	56	3
G.S. JEAN MOULIN		45.45%	54.55%	1.35%	0.39%	98.27%	0.39%	2.55%	11.18%	6.67%	37.45%	0.78%	2.75%	7.84%	0.39%	0.20%	0.78%	3.73%	13.73%	10.98%	0.59%

<b>BV 21</b>	1 001	447	554	4	1	442	3	3	60	24	175	6	1	52	2	8	3	13	32	55	5
G.S. IRENE JOLIOT CURIE	44.66%	55.34%	0.89%	0.22%	98.88%	0.68%	0.68%	13.57%	5.43%	39.59%	1.36%	0.23%	11.76%	0.45%	1.81%	0.68%	2.94%	7.24%	12.44%	1.13%	
<b>BV 22</b>	987	544	443	2	3	539	8	0	67	37	215	6	4	80	1	1	2	18	50	44	6
G.S. IRENE JOLIOT CURIE	55.12%	44.88%	0.37%	0.55%	99.08%	1.48%	0.00%	12.43%	6.86%	39.89%	1.11%	0.74%	14.84%	0.19%	0.19%	0.37%	3.34%	9.28%	8.16%	1.11%	

	Inscrits	Votants	Absent.	Blancs	Nuls	Exprimés	Jean-J. TOURNON	Liesse EL HABBAS	Alexis JOLLY	Pierre VERRI	Jean-Ch. COLAS-ROY	Bruno LAFEUILLE	Chantal GOMEZ	Magalie VICENTE	Hervé PEREZ	Alexandre GABRIAC	Philippe CHARLOT	Elisabeth LETZ	Taha BOUHAFS	David QUEIROS	Asra WASSFI
<b>■ TOTAL GENERAL</b>	20 879	8 790	12 089	112	37	8 641	80	172	1 313	482	3 069	121	116	794	66	52	45	210	1 075	991	55
		42.10%	57.90%	1.27%	0.42%	98.30%	0.93%	1.99%	15.20%	5.58%	35.52%	1.40%	1.34%	9.19%	0.76%	0.60%	0.52%	2.43%	12.44%	11.47%	0.64%

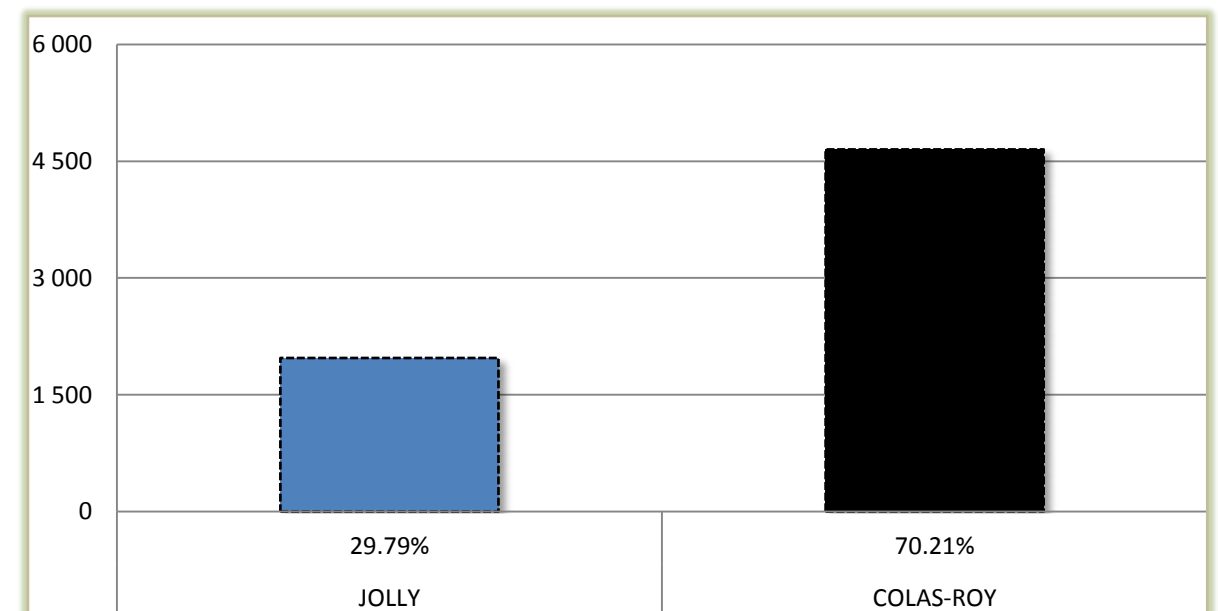
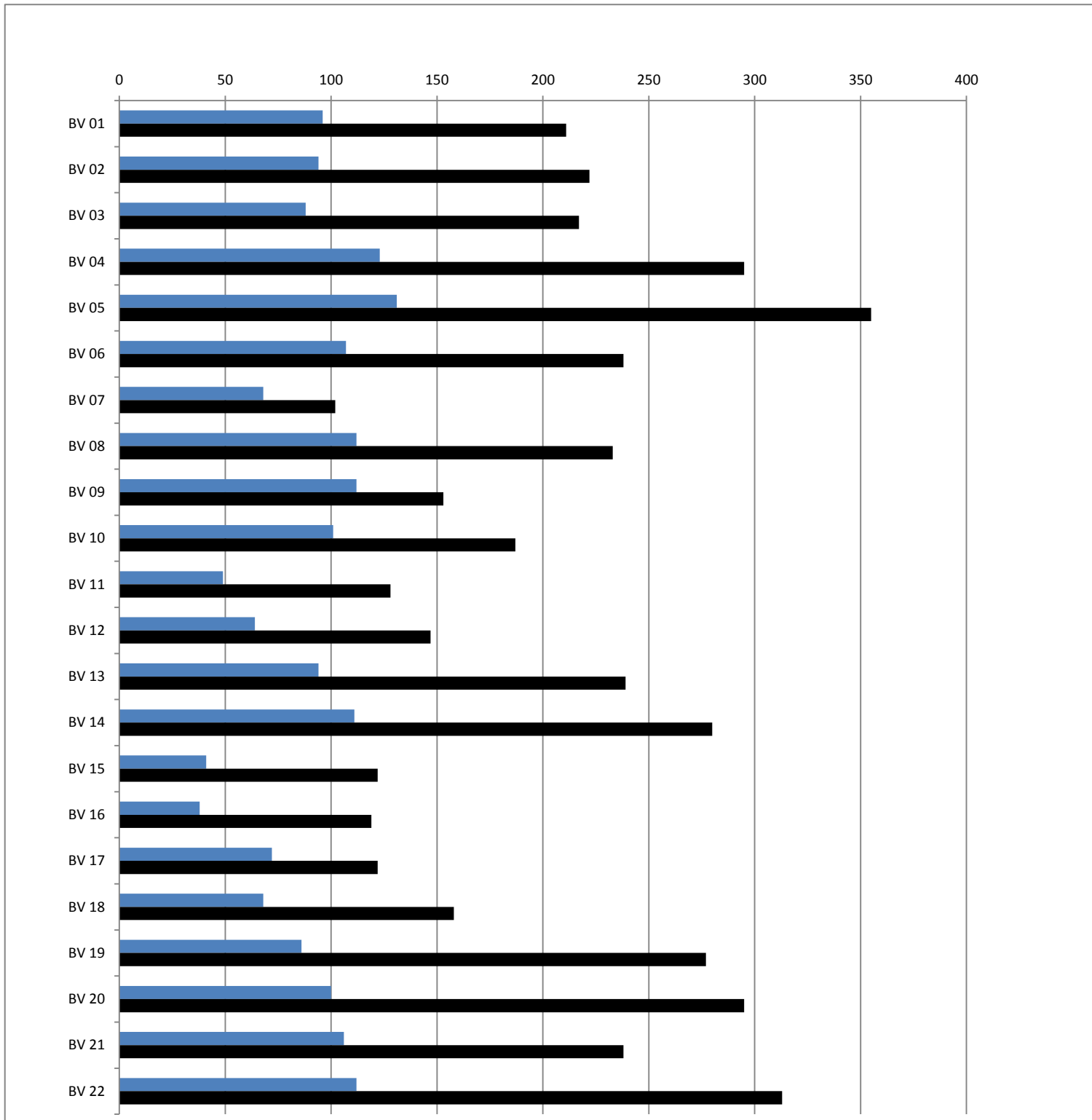
Inscrits :	20 879	
Votants :	7 381	35.35%
Abstentions :	13 498	64.65%
Blancs :	587	7.95%
Nuls :	170	2.30%
Exprimés :	6 624	89.74%

**Candidats**

- Alexis JOLLY
- Jean-Charles COLAS-ROY

**Bureaux de vote**

- BV 01 : Hôtel de ville
- BV 02 : Jean-Pierre Melville
- BV 03 : Paul Langevin
- BV 04 : Paul Langevin
- BV 05 : Estienne d'Orves
- BV 06 : La Rampe
- BV 07 : Auguste Delaune
- BV 08 : Auguste Delaune
- BV 09 : Marcel David
- BV 10 : Danielle Casanova
- BV 11 : Danielle Casanova
- BV 12 : Paul Vaillant Couturier
- BV 13 : Paul Vaillant Couturier
- BV 14 : Jean Jaurès
- BV 15 : Jean-Paul Marat
- BV 16 : Jean-Paul Marat
- BV 17 : Marcel Cachin
- BV 18 : Marcel Cachin
- BV 19 : Jean Moulin
- BV 20 : Jean Moulin
- BV 21 : Frédéric Joliot Curie
- BV 22 : Irène Joliot Curie



# ELECTIONS LEGISLATIVES 2017

## 2ème tour - Scrutin du 18 juin



Inscrits    Votants    Absent.    Blancs    Nuls    Exprimés

Alexis JOLLY

Jean-Charles COLAS-ROY

■ ECHIROLLES							20 879	7 381	13 498	587	170	6 624	1 973 29.79%	4 651 70.21%
🗳️	<b>BV 01</b>	HOTEL DE VILLE	946	330	616	17	6	307					96	211
				34.88%	65.12%	5.15%	1.82%	93.03%					31.27%	68.73%
🗳️	<b>BV 02</b>	ESPACE MELVILLE	962	359	603	30	13	316					94	222
				37.32%	62.68%	8.36%	3.62%	88.02%					29.75%	70.25%
🗳️	<b>BV 03</b>	G.S. PAUL LANGEVIN	881	350	531	38	7	305					88	217
				39.73%	60.27%	10.86%	2.00%	87.14%					28.85%	71.15%
🗳️	<b>BV 04</b>	G.S. PAUL LANGEVIN	1 122	459	663	26	15	418					123	295
				40.91%	59.09%	5.66%	3.27%	91.07%					29.43%	70.57%
🗳️	<b>BV 05</b>	ESPACE D'ESTIENNE D'ORVES	1 231	543	688	52	5	486					131	355
				44.11%	55.89%	9.58%	0.92%	89.50%					26.95%	73.05%
🗳️	<b>BV 06</b>	LA RAMPE	972	384	588	30	9	345					107	238
				39.51%	60.49%	7.81%	2.34%	89.84%					31.01%	68.99%
🗳️	<b>BV 07</b>	G.S. AUGUSTE DELAUNE	764	193	571	19	4	170					68	102
				25.26%	74.74%	9.84%	2.07%	88.08%					40.00%	60.00%
🗳️	<b>BV 08</b>	G.S. AUGUSTE DELAUNE	1 083	385	698	30	10	345					112	233
				35.55%	64.45%	7.79%	2.60%	89.61%					32.46%	67.54%
🗳️	<b>BV 09</b>	GYMNASE MARCEL DAVID	821	298	523	22	11	265					112	153
				36.30%	63.70%	7.38%	3.69%	88.93%					42.26%	57.74%
🗳️	<b>BV 10</b>	G.S. DANIELLE CASANOVA	919	323	596	30	5	288					101	187
				35.15%	64.85%	9.29%	1.55%	89.16%					35.07%	64.93%
🗳️	<b>BV 11</b>	G.S. DANIELLE CASANOVA	904	187	717	7	3	177					49	128
				20.69%	79.31%	3.74%	1.60%	94.65%					27.68%	72.32%

	<i>Inscrits</i>	<i>Votants</i>	<i>Absent.</i>	<i>Blancs</i>	<i>Nuls</i>	<i>Exprimés</i>	<b>Alexis JOLLY</b>	<b>Jean-Charles COLAS-ROY</b>
<b>BV 12</b> G.S. PAUL VAILLANT COUTURIER	899	236	663	17	8	211	64	147
		26.25%	73.75%	7.20%	3.39%	89.41%	30.33%	69.67%
<b>BV 13</b> G.S. PAUL VAILLANT COUTURIER	766	370	396	27	10	333	94	239
		48.30%	51.70%	7.30%	2.70%	90.00%	28.23%	71.77%
<b>BV 14</b> G.S. JEAN JAURES	945	428	517	34	3	391	111	280
		45.29%	54.71%	7.94%	0.70%	91.36%	28.39%	71.61%
<b>BV 15</b> G.S. JEAN PAUL MARAT	775	174	601	9	2	163	41	122
		22.45%	77.55%	5.17%	1.15%	93.68%	25.15%	74.85%
<b>BV 16</b> G.S. JEAN PAUL MARAT	832	167	665	9	1	157	38	119
		20.07%	79.93%	5.39%	0.60%	94.01%	24.20%	75.80%
<b>BV 17</b> G.S. MARCEL CACHIN	815	216	599	14	8	194	72	122
		26.50%	73.50%	6.48%	3.70%	89.81%	37.11%	62.89%
<b>BV 18</b> G.S. MARCEL CACHIN	997	251	746	20	5	226	68	158
		25.18%	74.82%	7.97%	1.99%	90.04%	30.09%	69.91%
<b>BV 19</b> G.S. JEAN MOULIN	1 115	420	695	44	13	363	86	277
		37.67%	62.33%	10.48%	3.10%	86.43%	23.69%	76.31%
<b>BV 20</b> G.S. JEAN MOULIN	1 142	449	693	39	15	395	100	295
		39.32%	60.68%	8.69%	3.34%	87.97%	25.32%	74.68%
<b>BV 21</b> G.S. IRENE JOLIOT CURIE	1 001	395	606	40	11	344	106	238
		39.46%	60.54%	10.13%	2.78%	87.09%	30.81%	69.19%
<b>BV 22</b> G.S. IRENE JOLIOT CURIE	987	464	523	33	6	425	112	313
		47.01%	52.99%	7.11%	1.29%	91.59%	26.35%	73.65%
	<i>Inscrits</i>	<i>Votants</i>	<i>Absent.</i>	<i>Blancs</i>	<i>Nuls</i>	<i>Exprimés</i>	<b>Alexis JOLLY</b>	<b>Jean-Charles COLAS-ROY</b>
<b>■ TOTAL GENERAL</b>	<b>20 879</b>	<b>7 381</b>	<b>13 498</b>	<b>587</b>	<b>170</b>	<b>6 624</b>	<b>1 973</b>	<b>4 651</b>
		35.35%	64.65%	7.95%	2.30%	89.74%	<b>29.79%</b>	<b>70.21%</b>