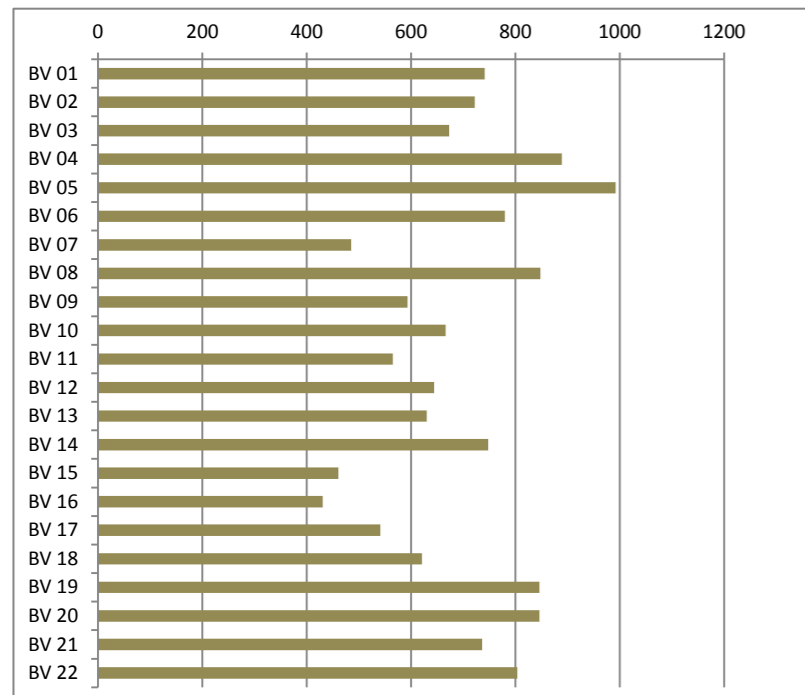




Résultats électoraux

Présidentielles 2017



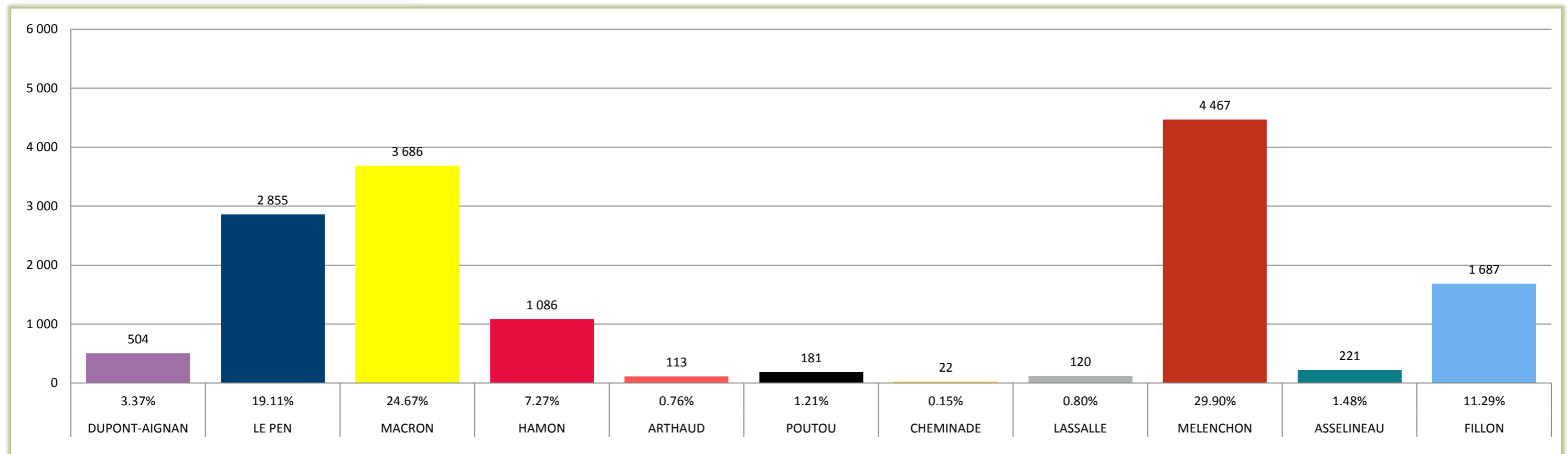
Bureaux de vote

- BV 01 : Hôtel de ville
- BV 02 : Jean-Pierre Melville
- BV 03 : Paul Langevin
- BV 04 : Paul Langevin
- BV 05 : Estienne d'Orves
- BV 06 : La Rampe
- BV 07 : Auguste Delaune
- BV 08 : Auguste Delaune
- BV 09 : Marcel David
- BV 10 : Danielle Casanova
- BV 11 : Danielle Casanova
- BV 12 : Paul Vaillant Couturier
- BV 13 : Paul Vaillant Couturier
- BV 14 : Jean Jaurès
- BV 15 : Jean-Paul Marat
- BV 16 : Jean-Paul Marat
- BV 17 : Marcel Cachin
- BV 18 : Marcel Cachin
- BV 19 : Jean Moulin
- BV 20 : Jean Moulin
- BV 21 : Frédéric Joliot Curie
- BV 22 : Irène Joliot Curie

Candidats

-  Nicolas DUPONT-AIGNAN
-  Marine LEPEN
-  Emmanuel MACRON
-  Benoît HAMON
-  Nathalie ARTHAUD
-  Philippe POUTOU
-  Jacques CHEMINADE
-  Jean LASSALLE
-  Jean-Luc MELENCHON
-  François ASSELINEAU
-  François FILLON

Inscrits :	20 849	
Votants :	15 262	73.20%
Abstentions :	5 587	26.80%
Blancs :	239	1.57%
Nuls :	81	0.53%
Exprimés :	14 942	97.90%



ELECTIONS PRESIDENTIELLES 2017

1er tour - Scrutin du 23 avril



	Inscrits	Votants	Absent.	Blancs	Nuls	Exprimés	Nicolas DUPONT-AIGNAN	Marine LE PEN	Emmanuel MACRON	Benoît HAMON	Nathalie ARTHAUD	Philippe POUTOU	Jacques CHEMINADE	Jean LASSALLE	Jean-Luc MELENCHON	François ASSELINEAU	François FILLON
■ ECHIROLLES	20 849	15 262	5 587	239	81	14 942	504 3.37%	2 855 19.11%	3 686 24.67%	1 086 7.27%	113 0.76%	181 1.21%	22 0.15%	120 0.80%	4 467 29.90%	221 1.48%	1 687 11.29%
BV 01	946	741	205	15	2	724	29	141	188	46	4	12	0	5	218	11	70
HOTEL DE VILLE		78.33%	21.67%	2.02%	0.27%	97.71%	4.01%	19.48%	25.97%	6.35%	0.55%	1.66%	0.00%	0.69%	30.11%	1.52%	9.67%
BV 02	959	722	237	15	3	704	39	138	156	56	5	5	0	3	219	6	77
ESPACE MELVILLE		75.29%	24.71%	2.08%	0.42%	97.51%	5.54%	19.60%	22.16%	7.95%	0.71%	0.71%	0.00%	0.43%	31.11%	0.85%	10.94%
BV 03	880	673	207	12	5	656	23	144	174	60	4	7	0	6	166	4	68
G.S. PAUL LANGEVIN		76.48%	23.52%	1.78%	0.74%	97.47%	3.51%	21.95%	26.52%	9.15%	0.61%	1.07%	0.00%	0.91%	25.30%	0.61%	10.37%
BV 04	1 120	889	231	12	4	873	39	185	238	67	3	9	2	13	208	4	105
G.S. PAUL LANGEVIN		79.38%	20.63%	1.35%	0.45%	98.20%	4.47%	21.19%	27.26%	7.67%	0.34%	1.03%	0.23%	1.49%	23.83%	0.46%	12.03%
BV 05	1 230	992	238	17	6	969	28	186	274	76	4	17	2	9	255	4	114
ESPACE D'ESTIENNE D'ORVES		80.65%	19.35%	1.71%	0.60%	97.68%	2.89%	19.20%	28.28%	7.84%	0.41%	1.75%	0.21%	0.93%	26.32%	0.41%	11.76%
BV 06	970	780	190	7	2	771	30	171	196	62	2	8	0	5	196	15	86
LA RAMPE		80.41%	19.59%	0.90%	0.26%	98.85%	3.89%	22.18%	25.42%	8.04%	0.26%	1.04%	0.00%	0.65%	25.42%	1.95%	11.15%
BV 07	762	485	277	7	2	476	13	99	83	35	9	10	1	2	184	15	25
G.S. AUGUSTE DELAUNE		63.65%	36.35%	1.44%	0.41%	98.14%	2.73%	20.80%	17.44%	7.35%	1.89%	2.10%	0.21%	0.42%	38.66%	3.15%	5.25%
BV 08	1 083	848	235	15	7	826	29	159	199	67	6	7	0	13	216	17	113
G.S. AUGUSTE DELAUNE		78.30%	21.70%	1.77%	0.83%	97.41%	3.51%	19.25%	24.09%	8.11%	0.73%	0.85%	0.00%	1.57%	26.15%	2.06%	13.68%
BV 09	819	593	226	9	4	580	23	147	155	19	6	11	1	6	141	7	64
GYMNASE MARCEL DAVID		72.41%	27.59%	1.52%	0.67%	97.81%	3.97%	25.34%	26.72%	3.28%	1.03%	1.90%	0.17%	1.03%	24.31%	1.21%	11.03%
BV 10	920	666	254	13	4	649	17	184	130	36	6	9	2	5	185	7	68
G.S. DANIELLE CASANOVA		72.39%	27.61%	1.95%	0.60%	97.45%	2.62%	28.35%	20.03%	5.55%	0.92%	1.39%	0.31%	0.77%	28.51%	1.08%	10.48%
BV 11	900	565	335	13	4	548	14	104	109	44	1	7	0	4	220	14	31
G.S. DANIELLE CASANOVA		62.78%	37.22%	2.30%	0.71%	96.99%	2.55%	18.98%	19.89%	8.03%	0.18%	1.28%	0.00%	0.73%	40.15%	2.55%	5.66%
BV 12	899	644	255	7	8	629	21	135	117	32	4	4	1	6	250	18	41
G.S. PAUL VAILLANT COUTURIER		71.64%	28.36%	1.09%	1.24%	97.67%	3.34%	21.46%	18.60%	5.09%	0.64%	0.64%	0.16%	0.95%	39.75%	2.86%	6.52%
BV 13	767	630	137	9	3	618	20	88	192	41	4	3	0	2	99	6	163
G.S. PAUL VAILLANT COUTURIER		82.14%	17.86%	1.43%	0.48%	98.10%	3.24%	14.24%	31.07%	6.63%	0.65%	0.49%	0.00%	0.32%	16.02%	0.97%	26.38%
BV 14	946	748	198	7	2	739	23	112	211	50	5	7	2	3	146	9	171
G.S. JEAN JAURES		79.07%	20.93%	0.94%	0.27%	98.80%	3.11%	15.16%	28.55%	6.77%	0.68%	0.95%	0.27%	0.41%	19.76%	1.22%	23.14%
BV 15	771	461	310	6	3	452	12	67	110	35	2	2	0	2	177	14	31
G.S. JEAN PAUL MARAT		59.79%	40.21%	1.30%	0.65%	98.05%	2.65%	14.82%	24.34%	7.74%	0.44%	0.44%	0.00%	0.44%	39.16%	3.10%	6.86%
BV 16	829	431	398	7	3	421	7	60	89	33	7	6	1	2	181	17	18
G.S. JEAN PAUL MARAT		51.99%	48.01%	1.62%	0.70%	97.68%	1.66%	14.25%	21.14%	7.84%	1.66%	1.43%	0.24%	0.48%	42.99%	4.04%	4.28%
BV 17	815	541	274	8	4	529	13	117	104	27	6	7	0	5	195	12	43
G.S. MARCEL CACHIN		66.38%	33.62%	1.48%	0.74%	97.78%	2.46%	22.12%	19.66%	5.10%	1.13%	1.32%	0.00%	0.95%	36.86%	2.27%	8.13%
BV 18	994	621	373	14	0	607	14	116	101	50	10	10	2	10	250	11	33
G.S. MARCEL CACHIN		62.47%	37.53%	2.25%	0.00%	97.75%	2.31%	19.11%	16.64%	8.24%	1.65%	1.65%	0.33%	1.65%	41.19%	1.81%	5.44%
BV 19	1 115	846	269	10	2	834	19	114	199	77	11	16	2	5	316	9	66
G.S. JEAN MOULIN		75.87%	24.13%	1.18%	0.24%	98.58%	2.28%	13.67%	23.86%	9.23%	1.32%	1.92%	0.24%	0.60%	37.89%	1.08%	7.91%
BV 20	1 138	846	292	12	5	829	26	121	219	60	7	7	3	3	295	9	79
G.S. JEAN MOULIN		74.34%	25.66%	1.42%	0.59%	97.99%	3.14%	14.60%	26.42%	7.24%	0.84%	0.84%	0.36%	0.36%	35.59%	1.09%	9.53%

BV 21	1 002	736	266	12	5	719	27	122	201	55	2	13	1	8	187	8	95
G.S. IRENE JOLIOT CURIE	73.45%	26.55%	1.63%	0.68%	97.69%	3.76%	16.97%	27.96%	7.65%	0.28%	1.81%	0.14%	1.11%	26.01%	1.11%	13.21%	
BV 22	984	804	180	12	3	789	38	145	241	58	5	4	2	3	163	4	126
G.S. IRENE JOLIOT CURIE	81.71%	18.29%	1.49%	0.37%	98.13%	4.82%	18.38%	30.54%	7.35%	0.63%	0.51%	0.25%	0.38%	20.66%	0.51%	15.97%	

	Inscrits	Votants	Absent.	Blancs	Nuls	Exprimés	Nicolas DUPONT-AIGNAN	Marine LE PEN	Emmanuel MACRON	Benoît HAMON	Nathalie ARTHAUD	Philippe POUTOU	Jacques CHEMINADE	Jean LASSALLE	Jean-Luc MELENCHON	François ASSELINEAU	François FILLON
TOTAL GENERAL	20 849	15 262	5 587	239	81	14 942	504	2 855	3 686	1 086	113	181	22	120	4 467	221	1 687
		73.20%	26.80%	1.57%	0.53%	97.90%	3.37%	19.11%	24.67%	7.27%	0.76%	1.21%	0.15%	0.80%	29.90%	1.48%	11.29%

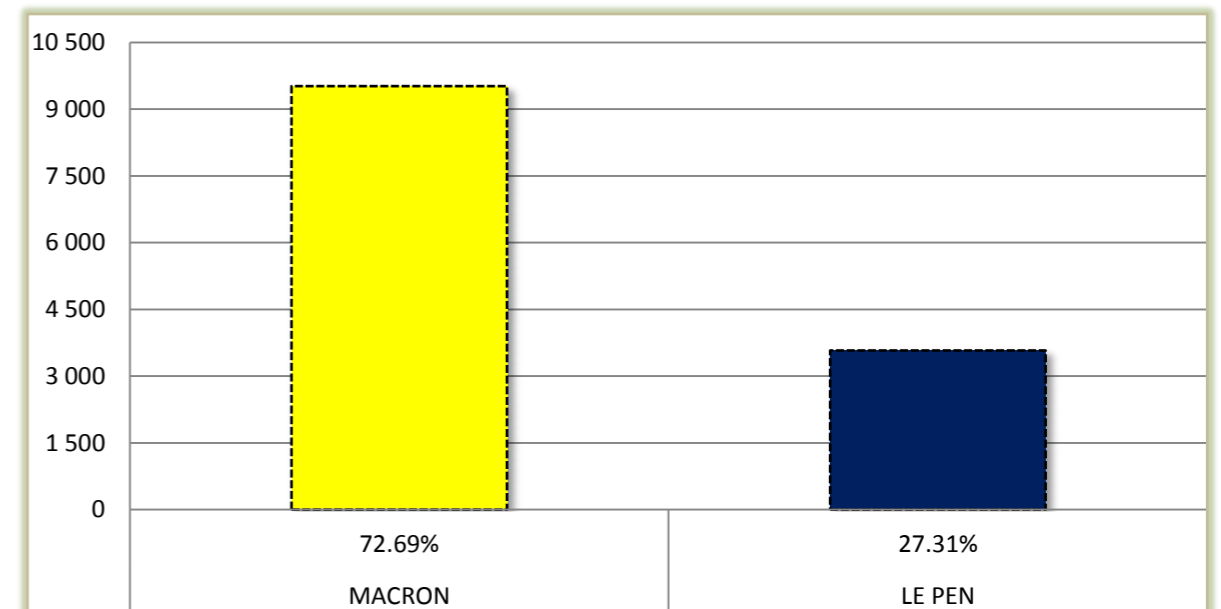
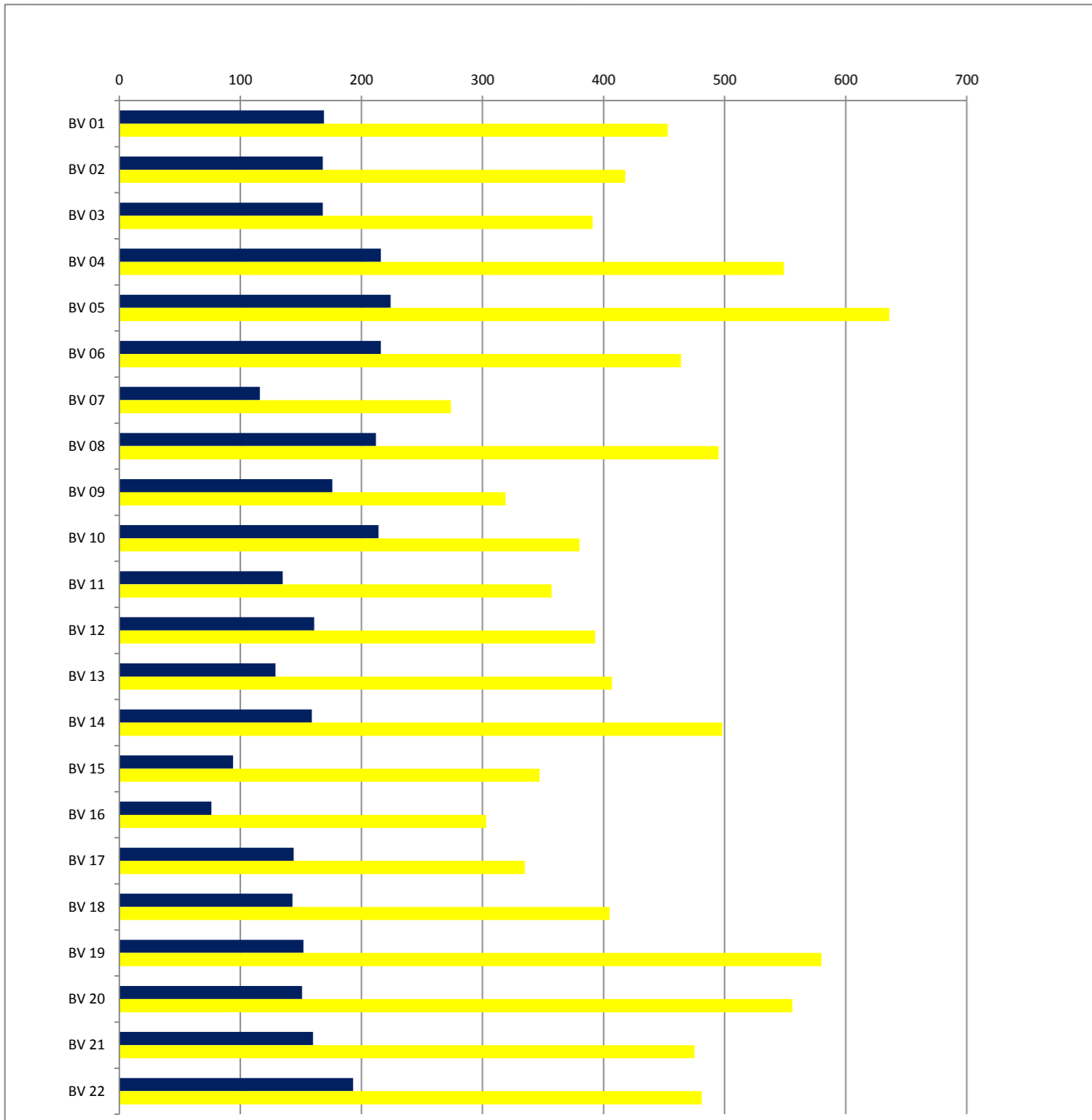
Inscrits :	20 849	
Votants :	14 578	69.92%
Abstentions :	6 271	30.08%
Blancs :	1 163	7.98%
Nuls :	323	2.22%
Exprimés :	13 092	89.81%

Candidats

- Emmanuel MACRON
- Marine LE PEN

Bureaux de vote

- BV 01 : Hôtel de ville
- BV 02 : Jean-Pierre Melville
- BV 03 : Paul Langevin
- BV 04 : Paul Langevin
- BV 05 : Estienne d'Orves
- BV 06 : La Rampe
- BV 07 : Auguste Delaune
- BV 08 : Auguste Delaune
- BV 09 : Marcel David
- BV 10 : Danielle Casanova
- BV 11 : Danielle Casanova
- BV 12 : Paul Vaillant Couturier
- BV 13 : Paul Vaillant Couturier
- BV 14 : Jean Jaurès
- BV 15 : Jean-Paul Marat
- BV 16 : Jean-Paul Marat
- BV 17 : Marcel Cachin
- BV 18 : Marcel Cachin
- BV 19 : Jean Moulin
- BV 20 : Jean Moulin
- BV 21 : Frédéric Joliot Curie
- BV 22 : Irène Joliot Curie



ELECTIONS PRESIDENTIELLES 2017

2ème tour - Scrutin du 7 mai



Inscrits Votants Absent. Blancs Nuls Exprimés Emmanuel MACRON Marine LE PEN

■ ECHIROLLES							20 849	14 578	6 271	1 163	323	13 092	9 516 72.69%	3 576 27.31%
🗳️	BV 01	HOTEL DE VILLE	946	686	260	51	13	622					453	169
				72.52%	27.48%	7.43%	1.90%	90.67%					72.83%	27.17%
🗳️	BV 02	ESPACE MELVILLE	959	661	298	64	11	586					418	168
				68.93%	31.07%	9.68%	1.66%	88.65%					71.33%	28.67%
🗳️	BV 03	G.S. PAUL LANGEVIN	880	640	240	59	22	559					391	168
				72.73%	27.27%	9.22%	3.44%	87.34%					69.95%	30.05%
🗳️	BV 04	G.S. PAUL LANGEVIN	1 120	856	264	70	21	765					549	216
				76.43%	23.57%	8.18%	2.45%	89.37%					71.76%	28.24%
🗳️	BV 05	ESPACE D'ESTIENNE D'ORVES	1 230	964	266	86	18	860					636	224
				78.37%	21.63%	8.92%	1.87%	89.21%					73.95%	26.05%
🗳️	BV 06	LA RAMPE	970	748	222	52	16	680					464	216
				77.11%	22.89%	6.95%	2.14%	90.91%					68.24%	31.76%
🗳️	BV 07	G.S. AUGUSTE DELAUNE	762	422	340	24	8	390					274	116
				55.38%	44.62%	5.69%	1.90%	92.42%					70.26%	29.74%
🗳️	BV 08	G.S. AUGUSTE DELAUNE	1 083	798	285	66	25	707					495	212
				73.68%	26.32%	8.27%	3.13%	88.60%					70.01%	29.99%
🗳️	BV 09	GYMNASE MARCEL DAVID	819	562	257	48	19	495					319	176
				68.62%	31.38%	8.54%	3.38%	88.08%					64.44%	35.56%
🗳️	BV 10	G.S. DANIELLE CASANOVA	920	665	255	50	21	594					380	214
				72.28%	27.72%	7.52%	3.16%	89.32%					63.97%	36.03%
🗳️	BV 11	G.S. DANIELLE CASANOVA	900	531	369	35	4	492					357	135
				59.00%	41.00%	6.59%	0.75%	92.66%					72.56%	27.44%

	<i>Inscrits</i>	<i>Votants</i>	<i>Absent.</i>	<i>Blancs</i>	<i>Nuls</i>	<i>Exprimés</i>	<i>Emmanuel MACRON</i>	<i>Marine LE PEN</i>
BV 12 G.S. PAUL VAILLANT COUTURIER	899	613	286	49	10	554	393	161
		68.19%	31.81%	7.99%	1.63%	90.38%	70.94%	29.06%
BV 13 G.S. PAUL VAILLANT COUTURIER	767	596	171	45	15	536	407	129
		77.71%	22.29%	7.55%	2.52%	89.93%	75.93%	24.07%
BV 14 G.S. JEAN JAURES	946	746	200	64	25	657	498	159
		78.86%	21.14%	8.58%	3.35%	88.07%	75.80%	24.20%
BV 15 G.S. JEAN PAUL MARAT	771	466	305	20	5	441	347	94
		60.44%	39.56%	4.29%	1.07%	94.64%	78.68%	21.32%
BV 16 G.S. JEAN PAUL MARAT	829	418	411	35	4	379	303	76
		50.42%	49.58%	8.37%	0.96%	90.67%	79.95%	20.05%
BV 17 G.S. MARCEL CACHIN	815	530	285	39	12	479	335	144
		65.03%	34.97%	7.36%	2.26%	90.38%	69.94%	30.06%
BV 18 G.S. MARCEL CACHIN	994	586	408	38	0	548	405	143
		58.95%	41.05%	6.48%	0.00%	93.52%	73.91%	26.09%
BV 19 G.S. JEAN MOULIN	1 115	811	304	53	26	732	580	152
		72.74%	27.26%	6.54%	3.21%	90.26%	79.23%	20.77%
BV 20 G.S. JEAN MOULIN	1 138	794	344	69	18	707	556	151
		69.77%	30.23%	8.69%	2.27%	89.04%	78.64%	21.36%
BV 21 G.S. IRENE JOLIOT CURIE	1 002	713	289	68	10	635	475	160
		71.16%	28.84%	9.54%	1.40%	89.06%	74.80%	25.20%
BV 22 G.S. IRENE JOLIOT CURIE	984	772	212	78	20	674	481	193
		78.46%	21.54%	10.10%	2.59%	87.31%	71.36%	28.64%
	<i>Inscrits</i>	<i>Votants</i>	<i>Absent.</i>	<i>Blancs</i>	<i>Nuls</i>	<i>Exprimés</i>	<i>Emmanuel MACRON</i>	<i>Marine LE PEN</i>
■ TOTAL GENERAL	20 849	14 578	6 271	1 163	323	13 092	9 516	3 576
		69.92%	30.08%	7.98%	2.22%	89.81%	72.69%	27.31%